

When You Walk Into The Room

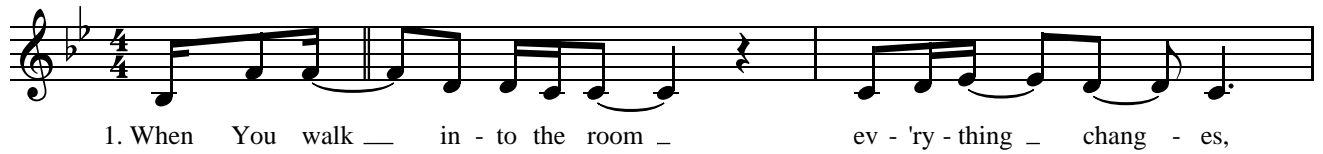
Words and Music by
Katie Torwalt and Bryan Torwalt

♩ = 72

VERSE 1

B \flat ⁵

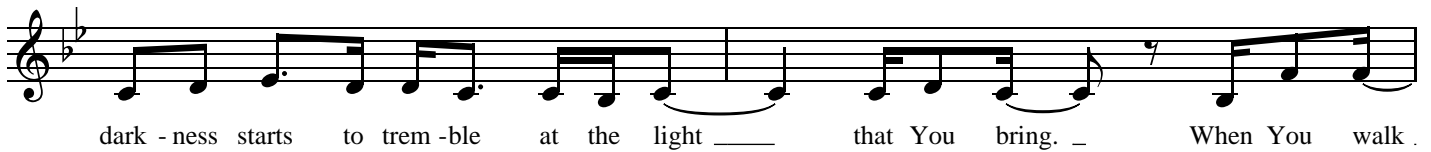
E \flat 2(no3)



3

Gm⁷

E \flat 2(no3)



5

B \flat ⁵

E \flat 2(no3)



7

Gm⁷

E \flat 2(no3)



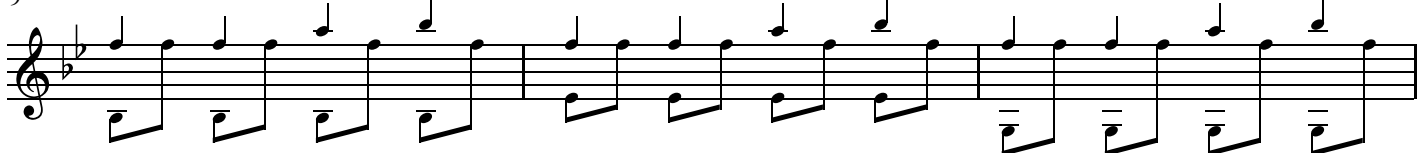
INSTRUMENTAL 1

9

B \flat ⁵

E \flat 2(no3)

Gm⁷



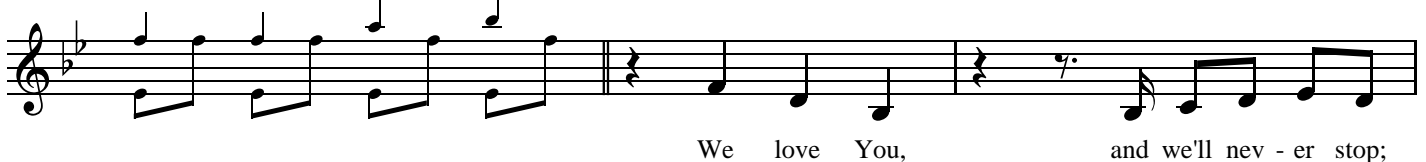
CHORUS

12

E \flat 2(no3)

B \flat

E \flat ²



CCLI Song # 7001307

© 2013 Capitol CMG Genesis | Jesus Culture Music

For use solely with the SongSelect® Terms of Use. All rights reserved. www.ccli.com

Note: Reproduction of this sheet music requires a CCLI Music Reproduction Licence. Please report all copies.

CCLI Licence No. 2161946

15 Gm^7 $E\flat^2$ $B\flat$

we can't live with - out ____ You, Je - sus. We love You,

18 $E\flat^2$ Gm^7 $E\flat^2$ $B\flat$ INSTRUMENTAL 2

we can't get e-nough; All this is for ____ You, Je - sus. ____

22 $E\flat^2$ Gm^7 $E\flat^2$ $B\flat$ VERSE 2

2. When You walk ____ in - to the room ____

26 $E\flat^2$ Gm^7

sick - ness starts ____ to van - ish, ev - 'ry hope - less sit - u - a - tion

28 $E\flat^2$ $B\flat$

ceas - es to ex - ist. ____ When You walk ____ in - to the room ____ the

30 $E\flat^2$ Gm^7 $E\flat^2$

dead be-gin ____ to rise ____ 'cause there ____ is res - ur-rec - tion life ____ in all ____ You do! ____

33 $B\flat$ $E\flat^2$ Gm^7 CHORUS

We love You, ____ and we'll nev - er stop; we can't live with - out ____

2nd time to Coda ⊕

36 $E\flat^2$ $B\flat$ $E\flat^2$ Gm^7

— You, Je - sus. We love You, ___ we can't get e-nough; All this is for _

INSTRUMENTAL 2

40 $E\flat^2$ $B\flat$ $E\flat^2$ Gm^7 $E\flat^2$

— You, Je - sus. ___

BRIDGE

45 $E\flat^2$ Gm^7

Come and con-sume, God, all we are; we give You per-mis-sion, our hearts are Yours. We want _

BRIDGE

47 $B\flat$ F/A $E\flat^2$

— You, _ we want ___ You. _ Come and con-sume, God, all we are; we

50 Gm^7

give You per - mis - sion, our hearts are Yours. We want ___

51 $B\flat$ 1. F 2. F D.S. al Coda

— You, ___ we want ___ You. _ — You. _

⊕ Coda

54 $E\flat^2$ $B\flat$ ENDING

— You, Je - sus. ___

56

E \flat ²Gm⁷E \flat ²B \flat 